

Upscale Serviced Residences



by
MAVERICK
H O T E L S
www.mymaverick.net

19-E/2, Gulberg 3, Lahore 54660, Pakistan | +92 42 3577 4343 | www.hydeparklahore.com



by
MAVERICK
H O T E L S
www.mymaverick.net



Relax



There's an air about you.
Particularly poolside.


Welcome to a world where chic meets casual. Hyde Park is an oasis of modern living in the beautiful Gulberg (Liberty Market) area. Revel in your own stylish 2, 3 or 4-bedroom serviced residence featuring an exceptional living experience with designer finishes, private entrances, inspired amenities and personalized service, just moments from shopping, dining and entertainment. Start your day in flip flops by the pool and end it in a world class restaurant. It's all waiting for you at **Hyde Park, where upscale is undone.**

Enhance your social life.

Just by stepping out your door.


Hyde Park is your passport to an exceptional living experience. From the moment you walk through the private entrance of your new serviced residence you will experience elevated living that's all about you. With stylish designer finishes, energy-efficient features and unexpected extras in every residence; you may never want to leave. When you do venture outside, there's a playground of possibilities waiting, from the pool to the courtyard to the movie theatre and more.


 **Blend** Sit Back, relax and enjoy a cup of coffee with friends in the lounge and café.

 **Connect** Enjoy dry cleaning pickup, package delivery and even a convenient concierge service all before hitting the town.


 **Meet** In a triple blending work place; an all-in-one conference centre, meeting rooms and business services area.


 **Play** A teched out, high-energy game room with large screen HDTVs for matches.


 **Sculpt** Get fit in your private 24/7 all-access fitness centre equipped with free weights, cardio, boxing, spinning and more.


 **All in One**
Gorgeous & elegant views of the city skyline.
Beautiful lobby.
Structure designed for seismic activity.
Café with retail Mini theatre.
Kids play area.
Game room.
BBQ/ Get together area.
Fitness centre.
Helipad.
Rooftop swimming pool.


 **Plunge** Roof-top pool complete with lounge seating and day beds.

 **Romp** Let the little ones run in their own playground with a jungle gym and plenty of room for fun.

 **Harvest** Nurture your green thumb and new friendships in the lush landscape just for you.

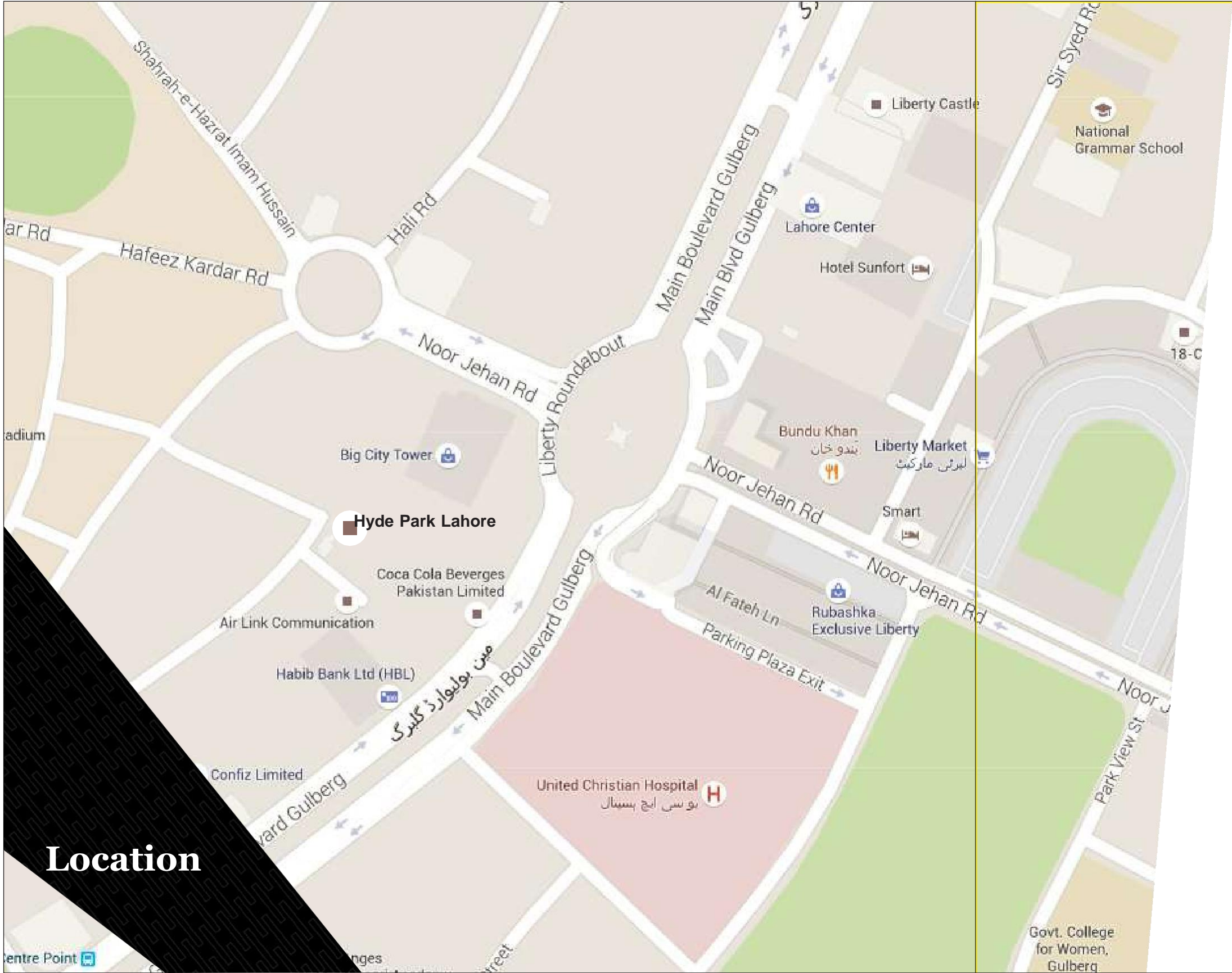
 **Dine** Expansive roof-top, courtyard, outdoor facility for a fun game of chess with a friend.

 **Flix** Watch a great classic or a hit blockbuster in your personal ultra-luxe theatre with lounge-style seating, surround sound and an 80-inch hi-def screen.

 **Organize**
4 elevators for quick transport of residents and guests; one cargo elevator.
Professionally landscaped green spaces.
Controlled access through security barriers and electronic security checks.
Fire alarm systems with smoke detectors and fire extinguishers.
High speed internet access.
TV cable with local and international channels.
Separate telephone lines for each residence.
Separate billing system for each facility.



Features



Its all about access. To everything.

Nestled in the highly desirable Gulberg (Liberty Market) area, Hyde Park offers a world of possibilities - all minutes from your front door. Get your Broadway fix at Al-Hamra Arts Centre of Performing Arts. Golfers can rejoice at the easy access to top-rated courses. Foodies are in paradise with Lahore's famed restaurants at 'MM Alam Road' around the corner. And of course, there's the convenient access to the major connecting roads of Lahore.

Explore your upscale undone life.

Education

1. Beacon House School
2. Lahore Grammar School
3. Lahore Pre School
4. National Grammar School
5. City School
6. Punjab College
7. Punjab University
8. Forman Christian College

Grocery & Drug Stores

1. Alfatah Mall
2. Gourmet Bakers
3. Doce Bakers
4. Shezan Bakers
5. Jalal Sons
6. Fazal Din's
7. Ahmed Medical Store

Shopping

1. Liberty Market
2. Galleria Shopping Mall
3. Mall One
4. Xinhua Mall
5. MM Alam Road; Vogue Tower; 10th Avenue and many more

Restaurant & Cafes

1. Gloria Jeans; Mocca Coffee Shop; Cinnabon
2. Aylantos
3. Cosa Nostra
4. China Town
5. Yum Restaurant
6. X2 Restaurant
7. Monal Restaurant; Salt & Peper; Village; BBQ Tonight
8. Pizza Hut; McDonald's; Fat Burger; Hardees; Burger King
9. Freddy's Café

Entertainment & Recreation

1. Vogue Tower Super Cinema
2. Al-Hamra Arts Council
3. Qaddafi Stadium Sports Complex
4. Shapes Health Studios
5. Kids Play Land

Golf Courses

1. Lahore Gymkhana
2. Royal Palm Country Club
3. Garrison Club
4. Defence RAYA Country Club

Hospitals & Medical Centers

1. Al Razi Hospital
2. Fazal Cardiac Hospital
3. Punjab Institute of Cardiology
4. United Christian Hospital
5. Dental Professionals Clinic
6. SKMH Labs; Chughtais Labs

Major Employers

1. Pakistan Cricket Board
2. Coca Cola Pakistan
3. Pepsi Cola International
4. Smart Hotel, Lahore
5. Allied Bank Limited
6. Bank Alfalah Limited
7. Summit Bank Limited
8. MCB Bank Limited
9. The Bank of Punjab

Exceptional living. On a whole new level.

An enviable location. A sparkling pool. An enticing private movie theatre. A hip cafe. A fun filled game room. Hi-tech and well equipped meeting rooms. Lush landscape. Hyde Park offers countless opportunities to connect and unwind creating an exceptional living experience. From a high-energy fitness studio to quiet meditation spaces and a beautifully landscaped roof top outdoor courtyard.

This is upscale undone.

Upscale Living

Comfortable, luxurious, secure, modern and hi-tech lifestyle.

Meticulously planned spaces to give optimum sizes for rooms, family and guest areas.

Best use of natural light with emphasis on green and environment friendly practices.

Granite and wooden floors.

Aesthetically designed ceilings and professionally calibrated lighting.

Prep-Kitchen

Washer/ dryer facility

Luxury kitchen fittings

Imported marble bathrooms with seperate tubs, shower closets and fittings.

Unexpected Extras

Uninterrupted electricity supply.

Uninterrupted gas supply (with full LPG options).

Central air conditioning, heating & exhausts; including energy efficient "Variable Refrigerant Flow" units, pumps and ancillary machinery.

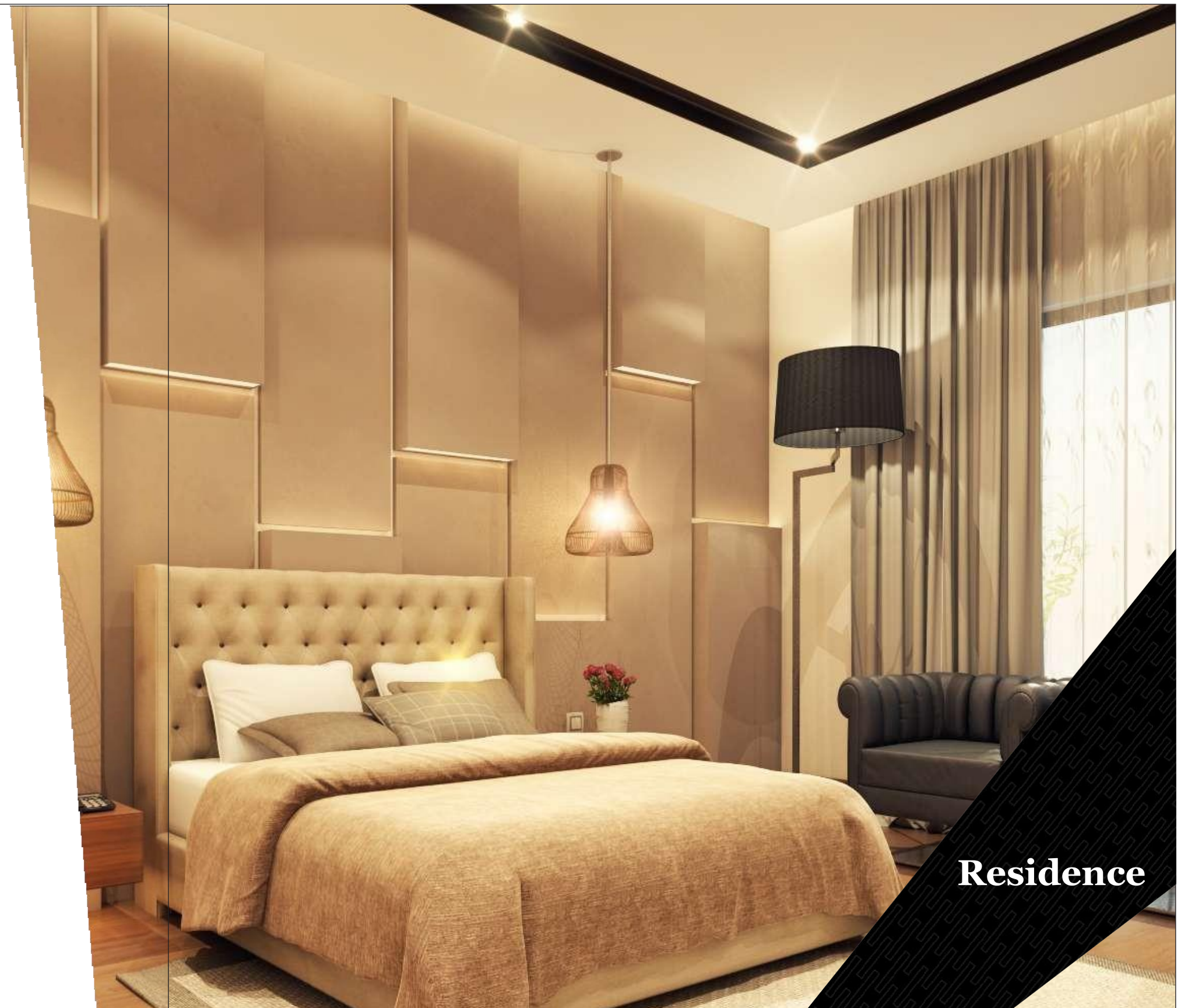
General maintenance services.

Housekeeping including waste management system.

Dedicated Parking for each residence; sufficient parking for visitors.

Bell desk/Concierge (for general enquiries and assistance).

Driver's quarters, cafe and waiting area.



Residence

[illegible]

Area	23,435 sft
Parking Bays	53
Concierge	
Conference and Meeting Rooms	
Business Centre	
Retail & Café	
Mini Theatre	
Gymnasium	
Game Room	



Ground Floor

Basement



Area 34,082 sft
Parking Bays 63
Drivers' Lodging and Lockers
Prayer Area
Elevators



Covered Area: 3,740 sft
Swimming Pool
Kids Play Area
Party Area

Roof-top



Total Area 22,468 sft
 Carpet Area 20,117 sft

Levels 1-6

A: 4 Bedrooms; 2,385 sft	B: 3 Bedrooms; 1,780 sft	C: 3 Bedrooms; 1,711 sft	D: 3 Bedrooms; 1,767 sft
E: 3 Bedrooms; 1,810 sft	F: 3 Bedrooms; 1,820 sft	G: 3 Bedrooms; 1,835 sft	H: 2 Bedrooms; 1,570 sft
I: 4 Bedrooms; 2,211 sft	J: 2 Bedrooms; 1,407 sft	K: 3 Bedrooms; 1,821 sft	

Serviced Residence - A

Carpet Area	2,385 sft
Common Area*	951 sft
Parking**	512 sft
Drivers' Lodging	26 sft
Total Area	3,874 sft

*Common area includes ducts, lobbies, stairs, elevators, common area walls and amenities allocated proportionally to the carpet area.
**Each parking includes 128 sft of parking bay and 128 sft of circulation.



Features

- Four Bedrooms en Suite
- Large Living & Dining Area
- Kitchen with Prep
- Maitre d' and Powder
- Central A/C & Heating
- Parking Bays: 2

Serviced Residence - B

Carpet Area	1,780 sft
Common Area*	829 sft
Parking**	256 sft
Drivers' Lodging	26 sft
Total Area	2,891 sft

*Common area includes ducts, lobbies, stairs, elevators, common area walls and amenities allocated proportionally to the carpet area.
**Each parking includes 128 sft of parking bay and 128 sft of circulation.



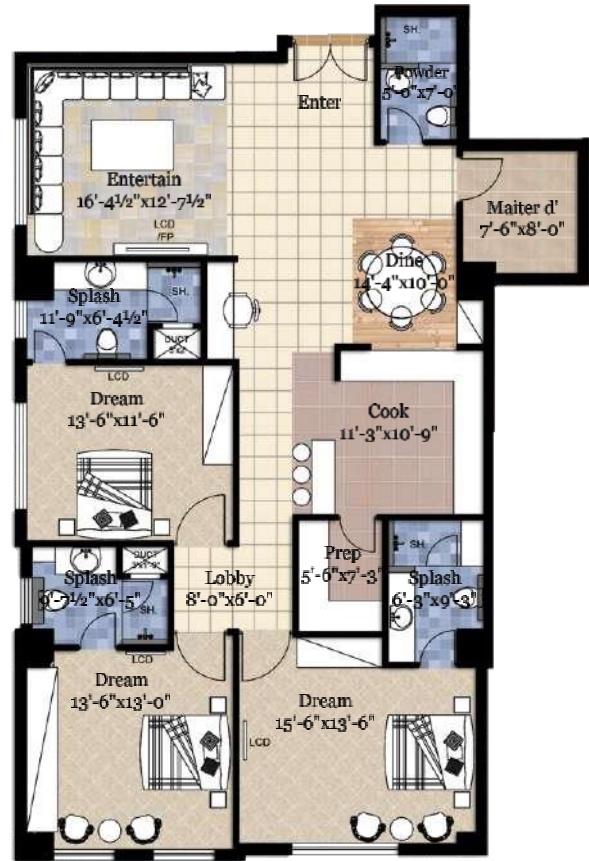
Features

- Three Bedrooms en Suite
- Large Living & Dining Area
- Kitchen with Prep
- Maitre d' and Powder
- Central A/C & Heating
- Parking Bays: 1

Serviced Residence - C

Carpet Area	1,711 sft
Common Area*	786 sft
Parking**	256 sft
Drivers' Lodging	26 sft
Total Area	2,779 sft

*Common area includes ducts, lobbies, stairs, elevators, common area walls and amenities allocated proportionally to the carpet area.
**Each parking includes 128 sft of parking bay and 128 sft of circulation.



Features

- Three Bedrooms en Suite
- Large Living & Dining Area
- Kitchen with Prep
- Maitre d' and Powder
- Central A/C & Heating
- Parking Bays: 1

Serviced Residence - D

Carpet Area	1,767 sft
Common Area*	821 sft
Parking**	256 sft
Drivers' Lodging	26 sft
Total Area	2,870 sft

*Common area includes ducts, lobbies, stairs, elevators, common area walls and amenities allocated proportionally to the carpet area.
**Each parking includes 128 sft of parking bay and 128 sft of circulation.



Features

- Three Bedrooms en Suite
- Large Living & Dining Area
- Kitchen with Prep
- Maitre d' and Powder
- Central A/C & Heating
- Parking Bays: 1

Serviced Residence - E

Carpet Area	1,810 sft
Common Area*	848 sft
Parking**	256 sft
Drivers' Lodging	26 sft
Total Area	2,940 sft

*Common area includes ducts, lobbies, stairs, elevators, common area walls and amenities allocated proportionally to the carpet area.
**Each parking includes 128 sft of parking bay and 128 sft of circulation.

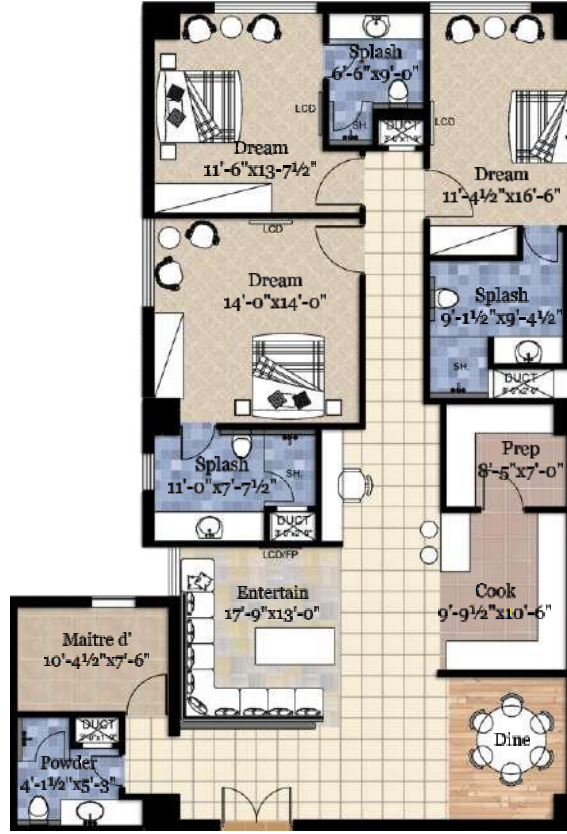


- Features**
Three Bedrooms en Suite
Large Living & Dining Area
Kitchen with Prep
Maitre d' and Powder
Central A/C & Heating
Parking Bays: 1

Serviced Residence - F

Carpet Area	1,820 sft
Common Area*	854 sft
Parking**	256 sft
Drivers' Lodging	26 sft
Total Area	2,956 sft

*Common area includes ducts, lobbies, stairs, elevators, common area walls and amenities allocated proportionally to the carpet area.
**Each parking includes 128 sft of parking bay and 128 sft of circulation.

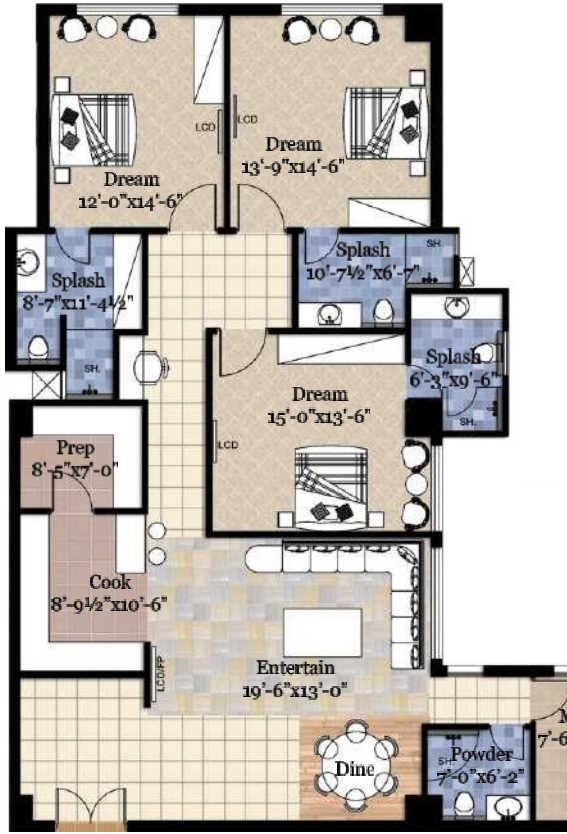


- Features**
Three Bedrooms en Suite
Large Living & Dining Area
Kitchen with Prep
Maitre d' and Powder
Central A/C & Heating
Parking Bays: 1

Serviced Residence - G

Carpet Area	1,835 sft
Common Area*	864 sft
Parking**	256 sft
Drivers' Lodging	26 sft
Total Area	2,981 sft

*Common area includes ducts, lobbies, stairs, elevators, common area walls and amenities allocated proportionally to the carpet area.
**Each parking includes 128 sft of parking bay and 128 sft of circulation.

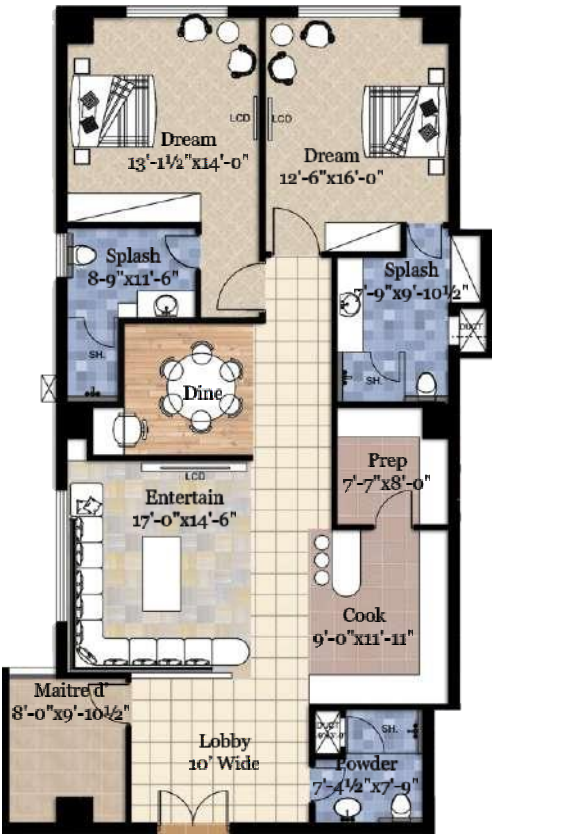


- Features**
Three Bedrooms en Suite
Large Living & Dining Area
Kitchen with Prep
Maitre d' and Powder
Central A/C & Heating
Parking Bays: 1

Serviced Residence - H

Carpet Area	1,570 sft
Common Area*	698 sft
Parking**	256 sft
Drivers' Lodging	26 sft
Total Area	2,550 sft

*Common area includes ducts, lobbies, stairs, elevators, common area walls and amenities allocated proportionally to the carpet area.
**Each parking includes 128 sft of parking bay and 128 sft of circulation.

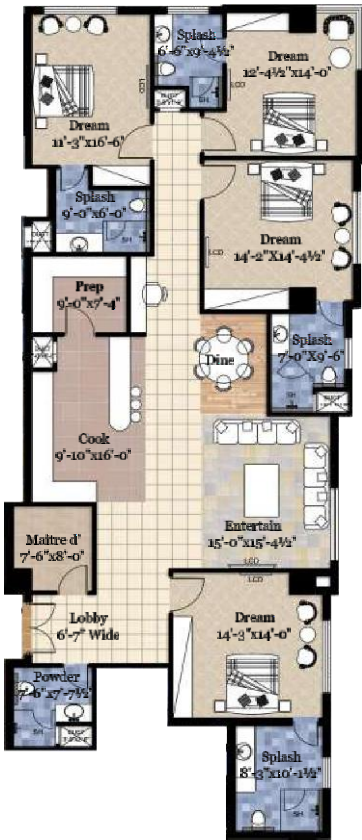


- Features**
Two Bedrooms en Suite
Large Living & Dining Area
Kitchen with Prep
Maitre d' and Powder
Central A/C & Heating
Parking Bays: 1

Serviced Residence - I

Carpet Area	2,211 sft
Common Area*	842 sft
Parking**	512 sft
Drivers' Lodging	26 sft
Total Area	3,591 sft

*Common area includes ducts, lobbies, stairs, elevators, common area walls and amenities allocated proportionally to the carpet area.
**Each parking includes 128 sft of parking bay and 128 sft of circulation.



Features
Four Bedrooms en Suite
Large Living & Dining Area
Kitchen with Prep
Maitre d' and Powder
Central A/C & Heating
Parking Bays: 2

Serviced Residence - J

Carpet Area	1,407 sft
Common Area*	596 sft
Parking**	256 sft
Drivers' Lodging	26 sft
Total Area	2,285 sft

*Common area includes ducts, lobbies, stairs, elevators, common area walls and amenities allocated proportionally to the carpet area.
**Each parking includes 128 sft of parking bay and 128 sft of circulation.



Features
Two Bedrooms en Suite
Large Living & Dining Area
Kitchen with Prep
Maitre d' and Powder
Central A/C & Heating
Parking Bays: 1

Serviced Residence - K

Carpet Area	1,821 sft
Common Area*	855 sft
Parking**	256 sft
Drivers' Lodging	26 sft
Total Area	2,958 sft

*Common area includes ducts, lobbies, stairs, elevators, common area walls and amenities allocated proportionally to the carpet area.
**Each parking includes 128 sft of parking bay and 128 sft of circulation.



Features
Three Bedrooms en Suite
Large Living & Dining Area
Kitchen with Prep
Maitre d' and Powder
Central A/C & Heating
Parking Bays: 1



Inspired vision. Exceptional quality. Unsurpassed service.
That's the Hyde Park promise.

Our goal is simple: to deliver an exceptional living experience to each and every resident who walks through our doors. Since 1960s, this has been the hallmark philosophy of the way we do business. It's why we've earned our reputation as one of the nation's premiere developers and managers of hotels, and now, luxury serviced residences. Our commitment is to impeccably serve you—our resident—by not only anticipating your every need, but also by ensuring that you're living life to the fullest at any one of our hotels and serviced residences. Thank you for choosing Hyde Park. We look forward to serving you in your new home.

